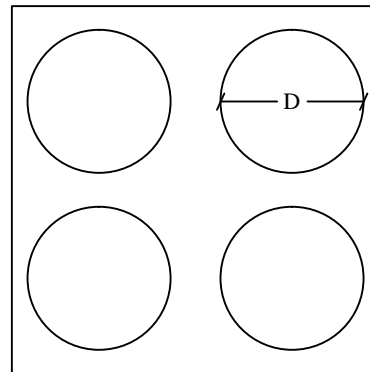
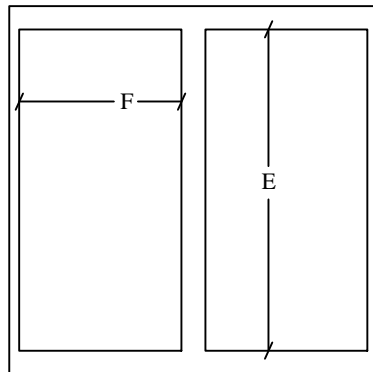
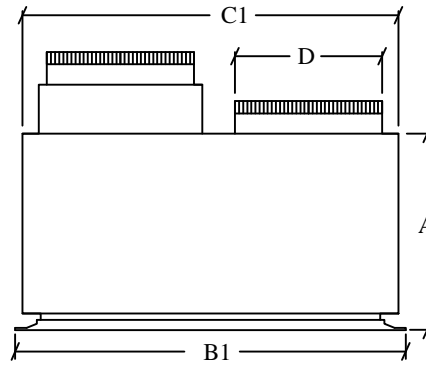
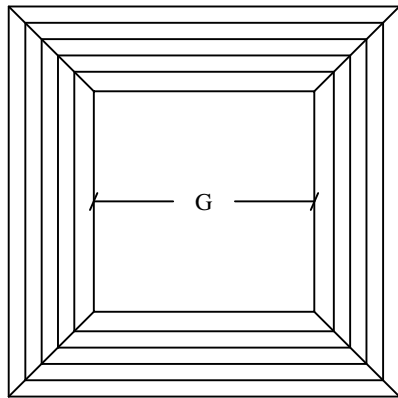


REVISIONS				
ZONE	REV	DESCRIPTION	DATE	APPROVED
	3	PRODUCT SUBMITTAL FLUSH MOUNT CONCENTRIC DIFFUSER SIZES 34 THRU 52	10/22/2011	MLS




QTY.	MODEL#	A	B1	B2	C1	C2	D	E	F	G	TONS	EST. WEIGHT
	FM34X	20.0"	35.75"	35.75"	34.0"	34.0"	14"	31.5"	15.0"	21"X21"	2.5 - 5	80 LBS
	FM40X	22.0"	41.75"	41.75"	40.0"	40.0"	16"	36.0"	18.0"	24"X24"	6 - 7.5	100 LBS
	FM46X	24.0"	47.75"	47.75"	46.0"	46.0"	18"	40.0"	20.0"	27"X27"	8.5-10	140 LBS
	FM52X	25.0"	53.75"	53.75"	52.0"	52.0"	20"	47.0"	22.0"	33"X33"	12.5	180 LBS

- Notes: 1: Weights include diffuser, collars, and one smoke detector option.
 2: Smoke detector option: 6" high
 3: Typical collar height: 4.5"
 4: Hard duct flange height: 1"
 5: FM34X thru FM52X use four (4) collars as noted
 6: Optional openings available
 7: Openings shown for illustrative purpose only
 8: Supply and Return air smoke detectors available
 9: R-8 Insulation

COPYRIGHT 2010, ALL RIGHTS RESERVED, SUBJECT TO CHANGE WITHOUT NOTICE

PATENTS PENDING

 www.epcustomproducts.com					
		7822 Commerce Drive Denver, NC 28037	SIZE	FSCM NO.	DWG NO.
Office: 704-483-8745 Fax: 704-483-8795		SCALE		SHEET	